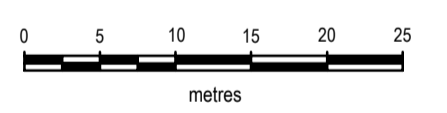


CERTIFICATION
 RPS Australia East Pty Ltd (ACN 140 292 762) certifies that the locations of the water infrastructure on this plan have been surveyed in accordance with the requirements of the ENGINEERING MANAGEMENT ACT and to the best of our knowledge and belief the information contained in this plan is accurate.

COPY STOP
UNAUTHORISED
DELEGATE

- IMPORTANT NOTE**
- This plan was prepared for the sole purposes of the client for the specific purpose of recording the infrastructure for the Cairns Regional Council. This plan is strictly limited to the Purpose and does not apply directly or indirectly and will not be used for any other application, purpose, use or matter. The plan is presented without the assumption of a duty of care to any other person (other than the Client) ("Third Party") and may not be relied on by Third Party.
 - RPS Australia East Pty Ltd will not be liable (in negligence or otherwise) for any direct or indirect loss, damage, liability or claim arising out of or incidental to:
 - Third Party publishing, using or relying on the plan;
 - RPS Australia East Pty Ltd relying on information provided to it by the Client or a Third Party where the information is incorrect, incomplete, inaccurate, out-of-date or unreasonable;
 - any inaccuracies or other faults with information or data sourced from a Third Party;
 - RPS Australia East Pty Ltd relying on surface indicators that are incorrect or inaccurate;
 - the Client or any Third Party not verifying information in this plan where recommended by RPS Australia East Pty Ltd;
 - lodgement of this plan with any local authority against the recommendation of RPS Australia East Pty Ltd;
 - the accuracy, reliability, suitability or completeness of any approximations or estimates made or referred to by RPS Australia East Pty Ltd in this plan.
 - Without limiting paragraph 1 or 2 above, this plan may not be copied, distributed, or reproduced by any process unless this note is clearly displayed on the plan.
 - Scale shown is correct for the original plan and any copies of this plan should be verified by checking against the bar scale.
 - Slope valves, hydrants and other visible surface indicators have been located by survey. Other information has been obtained from design and construction information (provided by Third Parties) and should be checked before use.
 - The positions of some services shown on this plan have been exaggerated for drawing clarity purposes. Dimensions shown take precedence over scaled position.

NOTES
 Level Datum: AHD
 Origin of Levels: PSM 71656
 RL 10.669
 Meridian: MGA Zone 55 GDA94
 Origin of Coordinates: PSM 150310
 E 357677.715
 N 8147025.192



SCALE 1:500 IS APPLICABLE ONLY TO THE ORIGINAL SHEET SIZE. (A1)
 (1:1000 @ A3)

PROJECT MANAGER I Doust	SURVEYED CF
COMPILED AMK	CAD REF PR134089-28.DWG
SHEET SIZE A1	PR134089 Overall As Constructed.mxd XR PR134089-27.DWG

RPS
 RPS Australia East Pty Ltd
 ACN 140 292 762
 135 Abbott St
 PO Box 1949
 CAIRNS QLD 4870
 T +61 7 4031 1336
 F +61 7 4031 2942
 W rpsgroup.com.au

ARGENTEA			
STAGES 1 TO 4			
AS-CONSTRUCTED			
WATER RETICULATION			
SHEET 1 OF 2			
SCALE 1:500	DATE 5/11/2018	DRAWING NO. PR134089-28	ISSUE

- LEGEND**
- HYDRANT
 - STOP VALVE
 - END CAP
 - JUNCTION
 - OMNI MARKER BALL

JOINS SHEET 2

JOINS SHEET 1

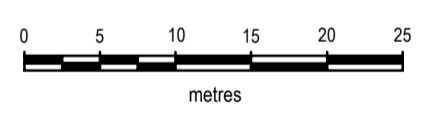
CERTIFICATION
RPS Australia East Pty Ltd (ACN 140 292 762) certifies that the locations, surface and level levels of the sewerage branches on this plan have been surveyed in accordance with the Queensland Survey Act 2012 and the Queensland Development Manual and that the locations of the sewerage branches are shown in the plan below.

IMPORTANT NOTE
1. This plan was prepared for the sole purposes of the client for the specific purpose of recording the infrastructure for the Cairns Regional Council. This plan is strictly limited to the Purpose and does not apply directly or indirectly and will not be used for any other application, purpose, use or matter. The plan is presented without the assumption of a duty of care to any other person (other than the Client) (Third Party) and may not be relied on by Third Party.

- RPS Australia East Pty Ltd will not be liable (in negligence or otherwise) for any direct or indirect loss, damage, liability or claim arising out of or incidental to:
 - Third Party publishing, using or relying on the plan;
 - RPS Australia East Pty Ltd relying on information provided to it by the Client or a Third Party where the information is incorrect, incomplete, inaccurate, out-of-date or unreasonable;
 - any inaccuracies or other faults with information or data sourced from a Third Party;
 - RPS Australia East Pty Ltd relying on surface indicators that are incorrect or inaccurate;
 - the Client or any Third Party not verifying information in this plan where recommended by RPS Australia East Pty Ltd;
 - lodgement of this plan with any local authority against the recommendation of RPS Australia East Pty Ltd;
 - the accuracy, reliability, suitability or completeness of any approximations or estimates made or referred to by RPS Australia East Pty Ltd in this plan.
- Without limiting paragraph 1 or 2 above, this plan may not be copied, distributed, or reproduced by any process unless this note is clearly displayed on the plan.
- Scale shown is correct for the original plan and any copies of this plan should be verified by checking against the bar scale.
- Type and size of mains, locations and levels of house connection branches and ends have been provided by the consulting contractor and have not been verified. Other information has been obtained from design and construction information [provided by Third Parties] and should be checked before use.
- The positions of some services shown on this plan have been exaggerated for drawing clarity purposes. Dimensions shown take precedence over scaled position.

NOTES

Level Datum: AHD
 Origin of Levels: PSM 71656
 RL 10.669
 Meridian: MGA Zone 55 GDA94
 Origin of Coordinates: PSM 150310
 E 357677.715
 N 8147025.192



SCALE 1:500 IS APPLICABLE ONLY TO THE ORIGINAL SHEET SIZE. (A1)
 (1:1000 @ A3)

PROJECT MANAGER I Doust	SURVEYED CF
COMPILED AMK	CAD REF PR134089-28.DWG
SHEET SIZE A1	PR134089 Overall As Constructed.mxd XR PR134089-27.DWG

RPS
 RPS Australia East Pty Ltd
 ACN 140 292 762
 135 Abbott St
 PO Box 1949
 CAIRNS QLD 4870
 T +61 7 4031 1336
 F +61 7 4031 2942
 W rpsgroup.com.au

ARGENTEA

**STAGES 1 TO 4
 AS-CONSTRUCTED
 WATER RETICULATION
 SHEET 2 OF 2**

SCALE 1:500	DATE 5/11/2018	DRAWING NO. PR134089-29	ISSUE
----------------	-------------------	----------------------------	-------



LEGEND

	HYDRANT
	STOP VALVE
	END CAP
	JUNCTION
	OMNI MARKER BALL

R:\Projects\134089\134089-28.dwg
 5/11/2018 11:11:11 AM
 I Doust
 1:500
 A1
 PR134089-29